

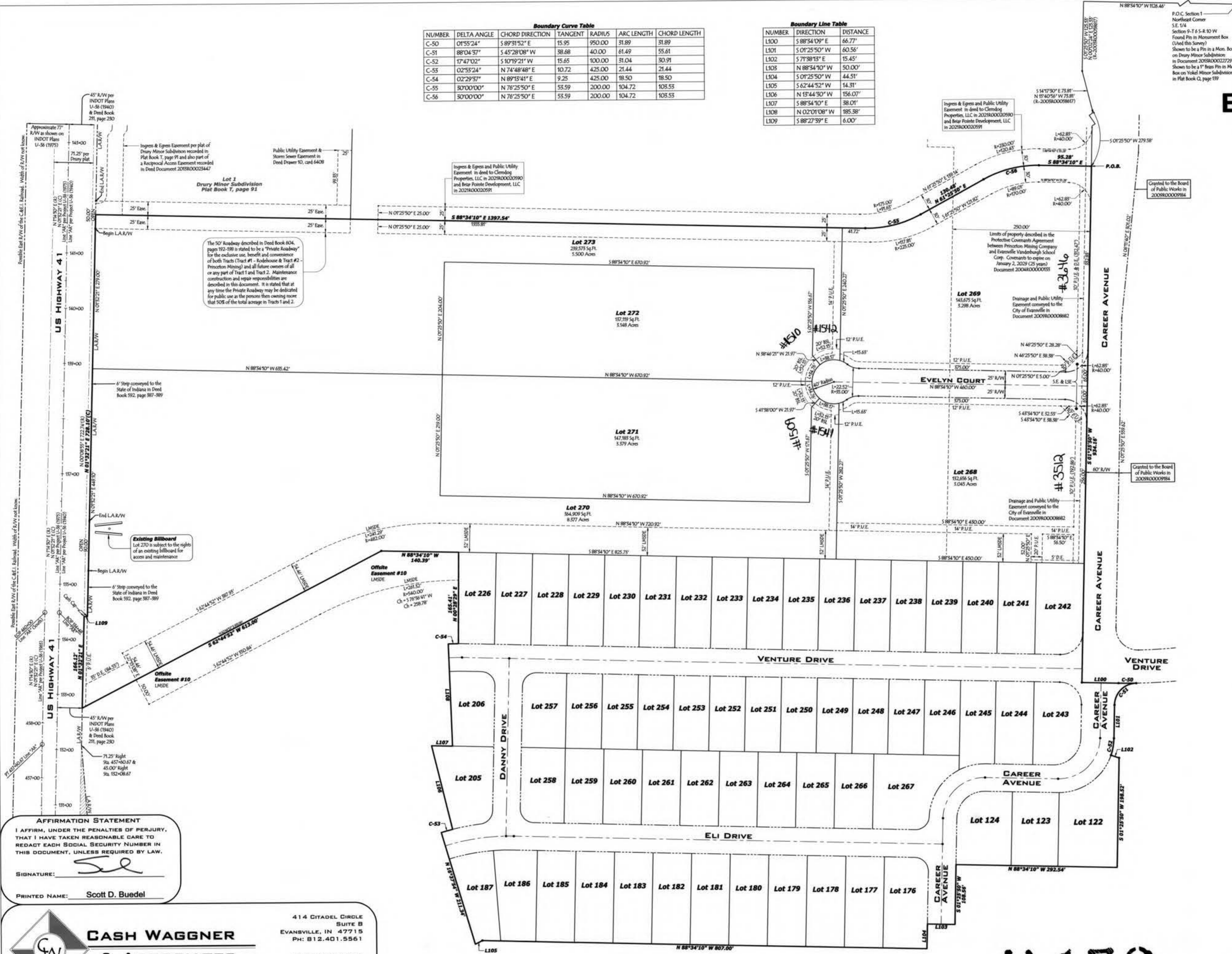
Boundary Curve Table

NUMBER	DELTA ANGLE	CHORD DIRECTION	TANGENT	RADIUS	ARC LENGTH	CHORD LENGTH
C-50	01°55'24"	S 89°31'52" E	15.95	950.00	31.89	31.89
C-51	88°04'57"	S 45°28'08" W	38.68	40.00	61.49	55.61
C-52	17°47'02"	S 10°19'21" W	15.65	100.00	31.04	30.91
C-55	02°55'24"	N 74°48'48" E	10.72	425.00	21.44	21.44
C-54	02°29'57"	N 89°15'41" E	9.25	425.00	18.50	18.50
C-55	30°00'00"	N 76°25'50" E	53.59	200.00	104.72	103.55
C-56	30°00'00"	N 76°25'50" E	53.59	200.00	104.72	103.55

Boundary Line Table

NUMBER	DIRECTION	DISTANCE
L100	S 88°54'09" E	66.77'
L101	S 01°25'50" W	60.56'
L102	S 71°38'15" E	15.45'
L103	N 88°54'10" W	50.00'
L104	S 01°25'50" W	44.51'
L105	S 62°44'52" W	14.31'
L106	N 15°44'30" W	156.07'
L107	S 88°54'10" E	38.01'
L108	N 02°01'08" W	185.38'
L109	S 88°27'39" E	6.00'

BRIAR POINTE SECTION 1



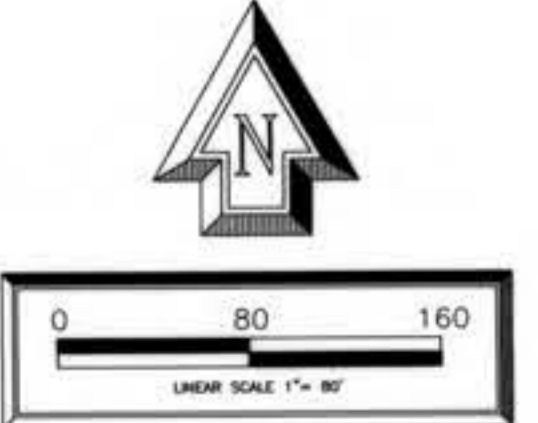
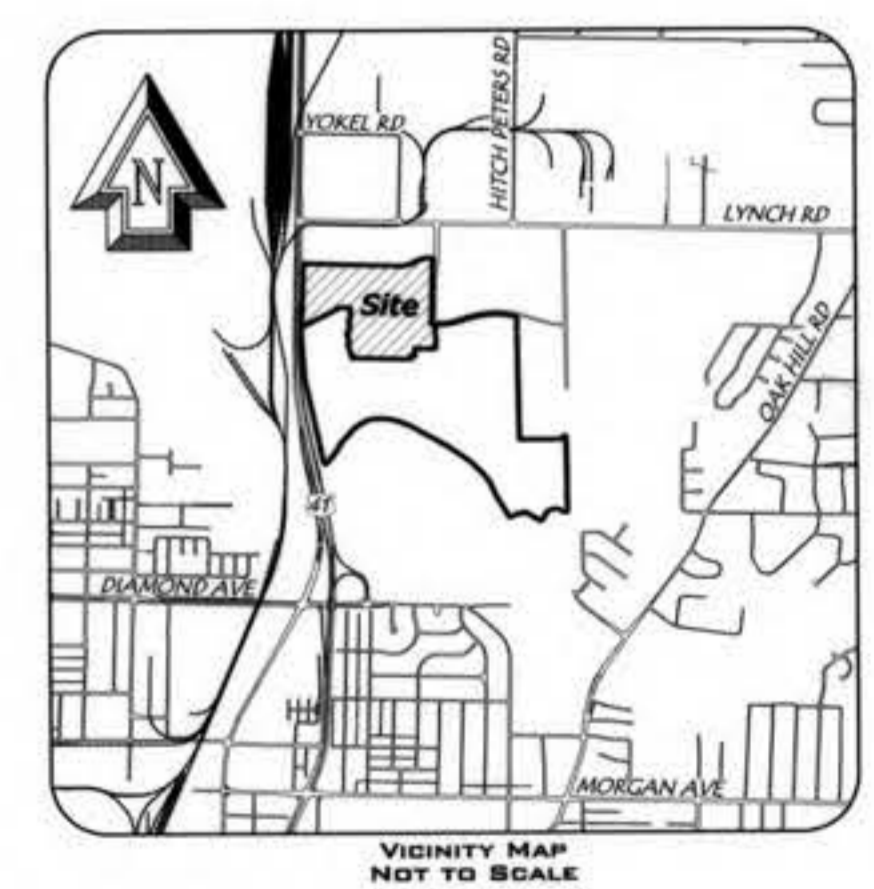
The 50' roadway described in Deed Book 604, pages 192-198 is stated to be a "Private Roadway" for the exclusive use, benefit and convenience of both Tract #1 - Kohlenstein & Tract #2 - Princeton Mining and all future owners of all or any part of Tract 1 and Tract 2. Maintenance construction and repair responsibilities are described in this document. It is stated that at any time the Private Roadway may be dedicated for public use as the persons then owning more that 50% of the total acreage in Tracts 1 and 2.

Existing Billboard
 Lot 270 is subject to the rights of an existing billboard for access and maintenance.

AFFIRMATION STATEMENT
 I AFFIRM, UNDER THE PENALTIES OF PERJURY, THAT I HAVE TAKEN REASONABLE CARE TO REDACT EACH SOCIAL SECURITY NUMBER IN THIS DOCUMENT, UNLESS REQUIRED BY LAW.
 SIGNATURE: *Scott D. Buedel*
 PRINTED NAME: Scott D. Buedel

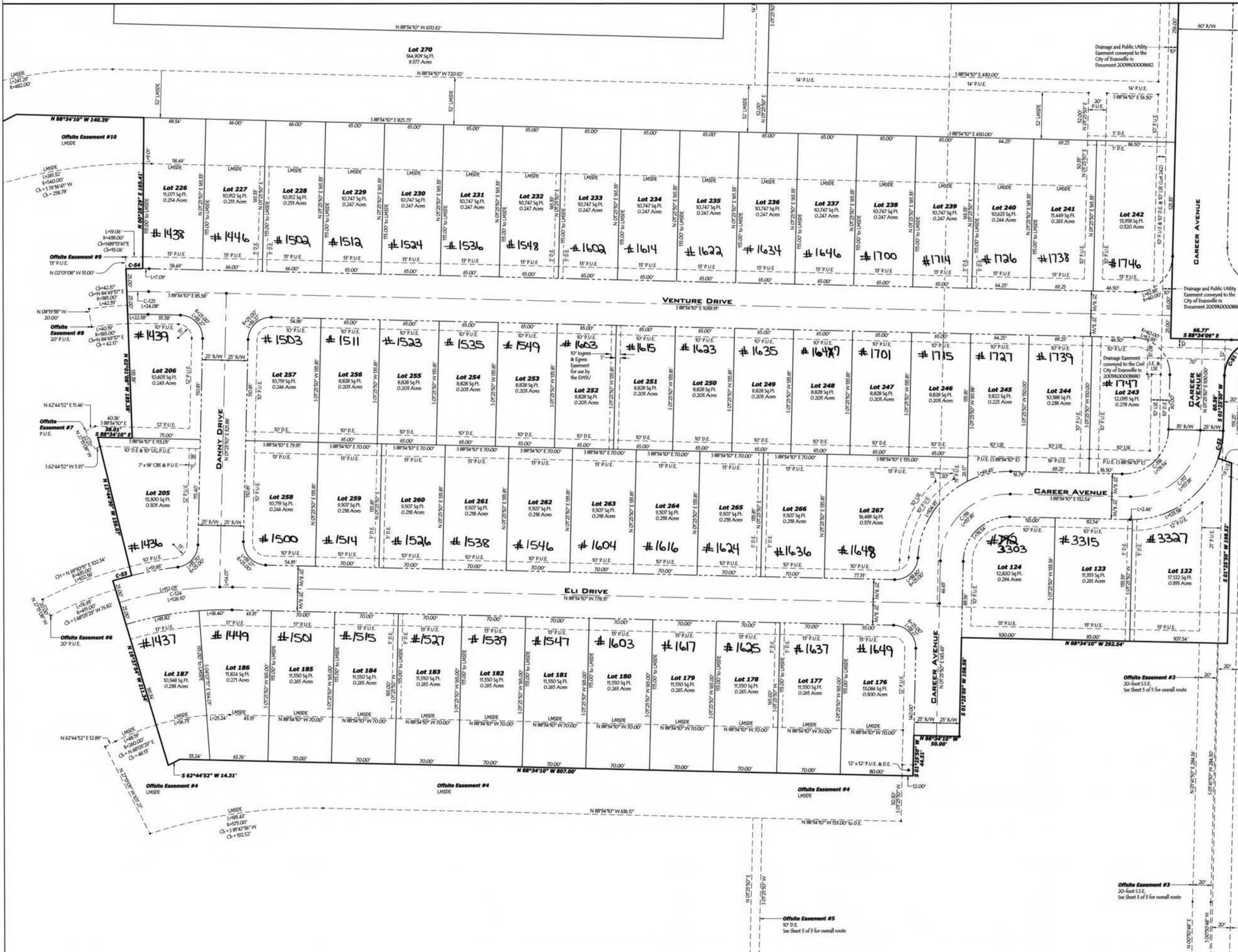
CASH WAGGNER & ASSOCIATES, PC
 CONSULTING ENGINEERS LAND SURVEYORS
 WWW.CASHWAGGNER.COM

414 CITADEL CIRCLE
 SUITE B
 EVANSVILLE, IN 47715
 PH: 812.401.5561
 402 E 13TH STREET
 JASPER, IN 47546
 PH: 812.634.5015



V.159

BRIAR POINTE SECTION 1



Granted to the Board of Public Works in Document 2009R0000862

Granted to the Board of Public Works in Document 2009R0000862

Drainage and Public Utility Easement conveyed to the City of Evansville in Document 2009R0000862

Drainage and Public Utility Easement conveyed to the City of Evansville in Document 2009R0000862

Storm Sewer Easement Agreement between Princeton Mining Company and Evansville Vanderburgh School Corp. in 2004R00000155

Offsite Easement #1 15-foot P.U.E. & LSE

Offsite Easement #2 15-foot P.U.E.

Storm Sewer Easement Agreement between Princeton Mining Company and Evansville Vanderburgh School Corp. in 2004R00000155

Offsite Easement #3 20-foot S.S.E. See Sheet 5 of 5 for overall route

Offsite Easement #4 LMSDE

Offsite Easement #4 LMSDE

Offsite Easement #4 LMSDE

Offsite Easement #5 10' D.E. See Sheet 5 of 5 for overall route

Offsite Easement #3 20-foot S.S.E. See Sheet 5 of 5 for overall route

Offsite Easement #3 20-foot S.S.E. See Sheet 5 of 5 for overall route

Storm Sewer Easement Agreement between Princeton Mining Company and Evansville Vanderburgh School Corp. in 2004R00000155

Storm Sewer Easement Agreement between Princeton Mining Company and Evansville Vanderburgh School Corp. in 2004R00000155

Storm Sewer Easement Agreement between Princeton Mining Company and Evansville Vanderburgh School Corp. in 2004R00000155

Storm Sewer Easement Agreement between Princeton Mining Company and Evansville Vanderburgh School Corp. in 2004R00000155

BOUNDARY CURVE DATA

NUMBER	DELTA ANGLE	CHORD DIRECTION	TANGENT	RADIUS	ARC LENGTH	CHORD LENGTH
C-50	0°15'24"	S 89°31'52" E	15.95	950.00	18.89	31.89
C-31	88°04'57"	S 45°29'08" W	38.88	400.00	61.49	55.61
C-53	17°47'02"	S 10°59'21" W	15.45	100.00	18.04	30.91
C-55	02°58'24"	N 74°48'48" E	10.72	425.00	21.44	21.44
C-54	02°29'57"	N 89°15'41" E	9.25	425.00	18.50	18.50
C-55	30°00'00"	N 78°25'50" E	53.59	200.00	104.72	108.53
C-56	30°00'00"	N 78°25'50" E	53.59	200.00	104.72	108.53

CENTERLINE CURVE DATA

NUMBER	DELTA ANGLE	CHORD DIRECTION	TANGENT	RADIUS	ARC LENGTH	CHORD LENGTH
C-156	90°00'00"	N 46°25'50" E	75.00	75.00	117.81	106.07
C-117	90°00'00"	N 46°25'50" E	75.00	75.00	117.81	106.07
C-124	180°00'00"	S 82°25'58" W	65.58	400.00	126.30	125.58
C-125	08°28'57"	S 89°42'21" W	12.04	400.00	24.08	24.08

