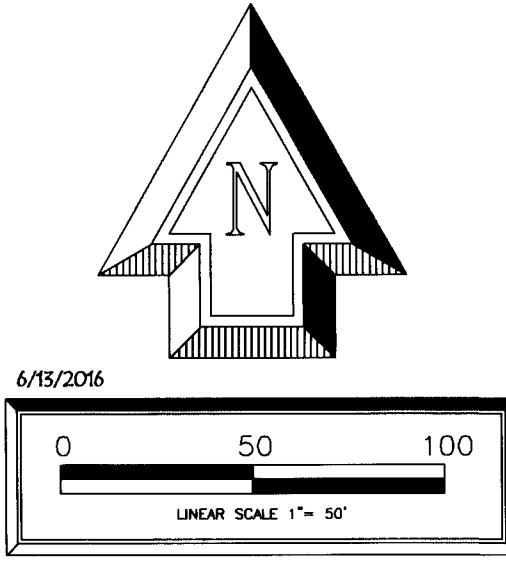


Boundary Curve Data					
NUMBER	C-1	C-2	C-3	C-4	C-5
DELTA ANGLE	90°27'45"	04°01'56"	89°22'54"	90°00'00"	90°00'00"
CHORD DIRECTION	S 44°12'07" E	N 87°25'01" W	S 44°16'47" E	N 46°01'46" E	S 43°58'14" E
TANGENT	25.20	2.64	24.73	25.00	25.00
RADIUS	25.00	75.00	25.00	25.00	25.00
ARC LENGTH	39.47	5.28	39.00	39.27	39.27
CHORD LENGTH	35.50	5.28	35.16	35.36	35.36

Offsite Easement Curve Data			
NUMBER	C-6	C-7	C-8
DELTA ANGLE	90°00'00"	90°27'45"	04°22'02"
CHORD DIRECTION	N 46°01'46" E	N 44°12'07" W	N 87°14'58" W
TANGENT	15.00	15.12	5.43
RADIUS	15.00	15.00	90.00
ARC LENGTH	23.56	23.68	6.86
CHORD LENGTH	21.21	21.30	6.86

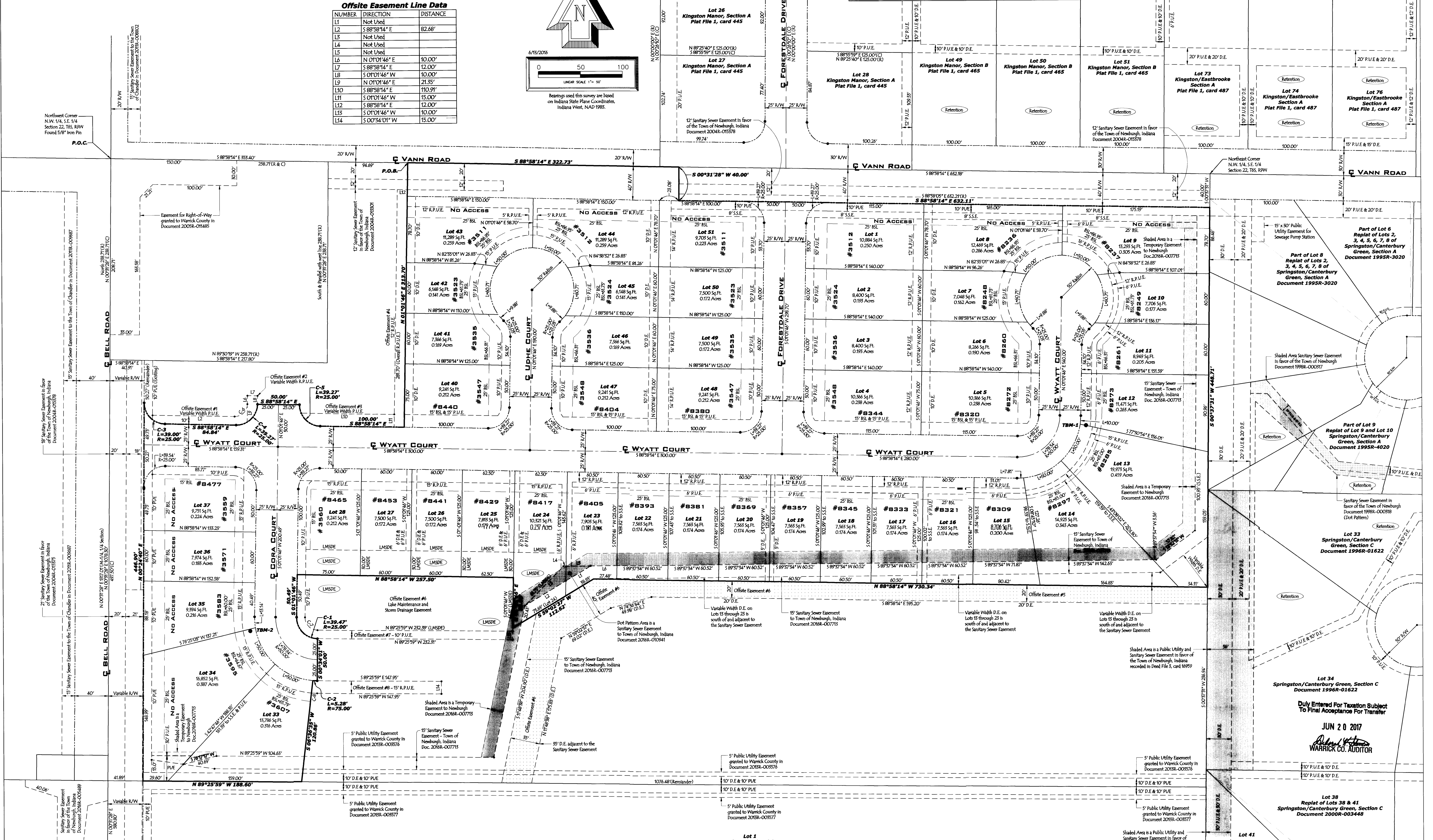
Offsite Easement Line Data			
NUMBER	DIRECTION	DISTANCE	
L1	Not Used		
L2	S 88°58'14" E	82.68'	
L3	Not Used		
L4	Not Used		
L5	Not Used		
L6	N 07°01'46" E	10.00'	
L7	S 88°58'14" E	12.00'	
L8	S 07°01'46" W	10.00'	
L9	N 07°01'46" E	21.50'	
L10	S 88°58'14" E	110.91'	
L11	S 07°01'46" W	15.00'	
L12	S 88°58'14" E	12.00'	
L13	S 07°01'46" W	10.00'	
L14	S 07°01'46" W	15.00'	



# Spring Creek Subdivision Section 1

A subdivision of part of Lot 2 in Martin Bell Subdivision, as per plat thereof, recorded in Document 2013R-002629 in the Office of the Recorder of Warrick County, Indiana and also part of the Northwest Quarter of the Southeast Quarter of Section 22, Township 6 South, Range 9 West in Ohio Township, Warrick County, Indiana

2017R-005208  
PAT BROOKS  
WARRICK COUNTY RECORDER  
RECORDED AS PRESENTED ON  
06/20/2017 12:41 PM  
REC.FEE: 26.00  
PAGE(S): 3  
**2017R-005208 6/20/2017**



Duly Entered For Taxation Subject To Final Acceptance For Transfer  
**JUN 20 2017**  
*Pat Brooks*  
WARRICK CO. AUDITOR